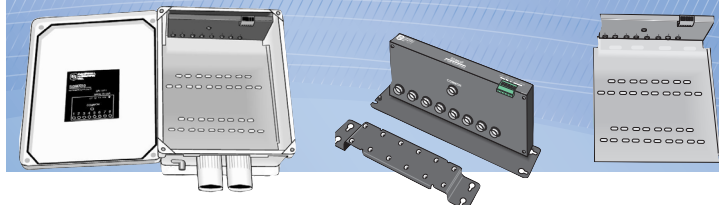




SDMX50-SERIES

50 Ω Coaxial Multiplexers for TDR100-based Systems

*Rugged, Reliable, and Ready
for any Application*



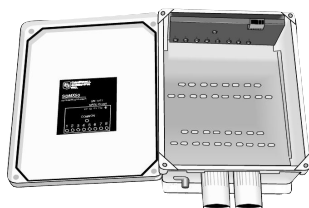
Campbell Scientific's SDMX50-series multiplexers allows measurement of up to 512 TDR probes in a TDR100-based system. They are 50 Ω , coaxial, 8:1 multiplexers with surge protection. These multiplexers use our SDM communications protocol and can be controlled via a datalogger or a computer running PC-TDR software (included with the TDR100). The models differ only in their packaging.

Power requirements of the SDMX50 series are:

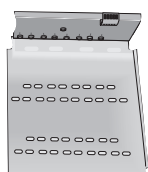
- Input Power: 12 Vdc
- Quiescent Current Drain: < 1 mA
- Current Drain during switching: ~ 90 mA (all multiplexers of the same level switch simultaneously for less than 1 s)

MAJOR SPECIFICATIONS

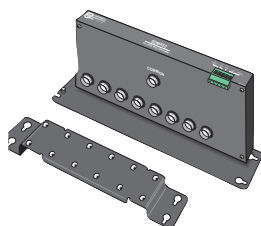
SDMX50 | 50 Ω Coaxial
Multiplexer with
Enclosure

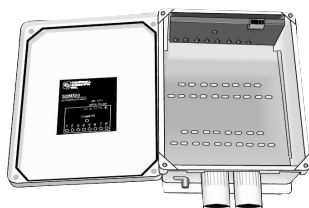
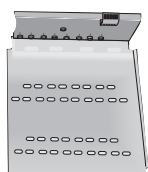
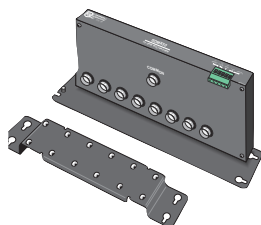


SDMX50LP | 50 Ω Coaxial
Multiplexer with 10 in. by 12 in.
Backplate (No Enclosure)



SDMX50SP | 50 Ω Coaxial
Multiplexer with Strain
Relief Bracket



	Consists of	Size	When Used
<p>SDMX50 50 Ω Coaxial Multiplexer with Enclosure</p> 	<p>Multiplexer circuit board mounted in an environmental enclosure with a strain relief backplate.</p> <p>Enclosure includes a bracket for mounting it to a tripod, tower, or a 1.0 in. to 1.25 in. IPS Schedule 40 pipe</p>	<p><u>Weight</u> 4.4 kg (9.8 lb)</p> <p><u>Enclosure Outside Dimensions with Mounts</u> 40.4 x 29.2 x 17.5 cm (15.9 x 11.5 x 6.9 in)</p> <p><u>Enclosure Inside Dimensions</u> 25.4 x 30.4 x 12.7 cm (10 x 12 x 5 in)</p>	<p>When the multiplexer will be housed in its own enclosure (without the datalogger and power supply).</p>
<p>SDMX50LP 50 Ω Coaxial Multiplexer with 10 in. by 12 in. Backplate (No Enclosure)</p> 	<p>Multiplexer circuit board attached to one end of a strain relief backplate.</p>	<p><u>Circuit Board Dimensions</u> 24.9 x 12.2 x 4.6 cm (9.8 x 4.8 x 1.8 in)</p> <p><u>Strain Relief Backplate Dimensions</u> 26.7 x 27.9 x 1.3 cm (10.5 x 11 x 0.5 in)</p>	<p>When a user-supplied enclosure will house only the multiplexer (without the datalogger and power supply).</p>
<p>SDMX50SP 50 Ω Coaxial Multiplexer with Strain Relief Bracket</p> 	<p>Multiplexer circuit board encased in metal housing and a separate strain relief bracket.</p> <p>Both the circuit board and bracket include mounting holes and hardware for attaching them to the backplate of an enclosure (typically the ENCTDR100), or to a wall.</p>	<p><u>Weight</u> 590 g (1.3 lb)</p> <p><u>Multiplexer Housing Dimensions with Mounts</u> 24.9 x 12.2 x 4.6 cm (9.8 x 4.8 x 1.8 in)</p> <p><u>Strain Relief Bracket Dimensions</u> 20.3 x 4.3 x 1.3 cm (8.0 x 1.7 x 0.5 in)</p>	<p>When the multiplexer will be housed in the same enclosure as the datalogger and power supply.</p> <p>Or when the multiplexer will reside in a building.</p>



Campbell Scientific, Inc. | 815 W 1800 N | Logan, UT 84321-1784 | (435) 227-9000 | www.campbellsci.com
USA | AUSTRALIA | BRAZIL | CANADA | CHINA | COSTA RICA | ENGLAND | FRANCE | GERMANY | SOUTH AFRICA | SPAIN

© 2013
Campbell Scientific, Inc.
October 2, 2013

More info: 435.227.9000

campbellsci.com/tdr-multiplexers

